

## Discussion Questions for Shaun Tan's *The Arrival* - Chapter 2

---

*The pages are not numbered in the book, but Chapter 2 begins on the 17th page.*

### Page 17

(panel 1) Who is in the photograph?

Why is the man eating while looking at the picture?

### Pages 18-19

Why has the artist chosen to use two pages for this panel?

Why do you think the boat is so small in comparison to the cloud?

### Pages 20-21

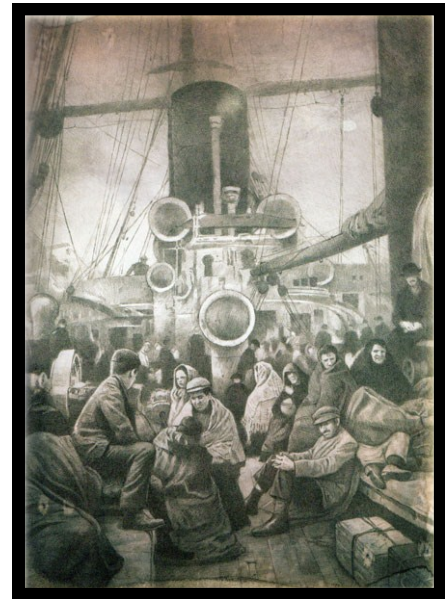
What is the artist trying to convey by having so many panels with clouds in them?

### Page 23

Look at the following photograph and the page from **The Arrival**:



[http://www.ellisland.org/photoalbums/ellis\\_island\\_album106.asp](http://www.ellisland.org/photoalbums/ellis_island_album106.asp)



Page 23

Why has the artist chosen to make this page look like a photograph of immigrants coming to Ellis Island?

## Discussion Questions for Shaun Tan's *The Arrival* - Chapter 2

### Page 24-25

Look at these images of the Statue of Liberty:



What ideas are being shown in the Statue of Liberty?



What ideas are being shown in the statue on page 25?

How are these two sculptures alike?

How are they different?

### Page 26

What do you think the artist is trying to convey with the way lighting shown in the picture? How would the meaning change if the lighting were darker?

## Discussion Questions for Shaun Tan's *The Arrival* - Chapter 2



Watch the movie clip "Immigrants Landing at Ellis Island"

**YouTube Link:** <http://www.youtube.com/watch?v=3bhufeQDRoM&feature=youtu.be>

**Library of Congress Link:**

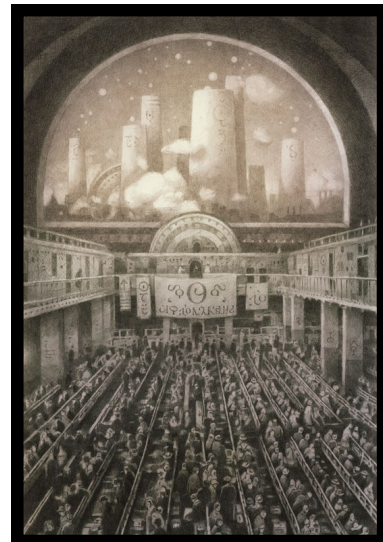
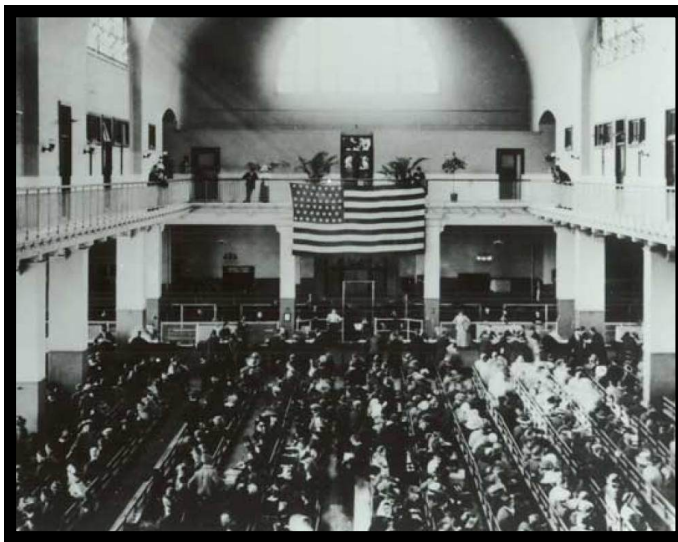
[http://memory.loc.gov/cgi-bin/query/h?ammem/papr:@field\(NUMBER+@band\(lcmp002+m2a10987\)\)](http://memory.loc.gov/cgi-bin/query/h?ammem/papr:@field(NUMBER+@band(lcmp002+m2a10987)))

### Page 27

Compare and contrast the sequence of panels on this page to the movie clip.

### Page 28

Look at this iconic image from the Great Hall of Ellis Island (1907-1912). Compare and contrast it to the image on page 28.



### Page 29

What kinds of things do you think they are checking on?

What things caused immigrants to be turned away from the USA?

### Page 30

How does the man in the hat feel?

What do you see in the images that support your opinion?

### Page 31

What do you think they are writing?

What is the hand doing in the final panel?

## Discussion Questions for Shaun Tan's *The Arrival* - Chapter 2

---

### Page 39

What are some items that the artist has changed the scale or size of?

What effect does this have on you, the reader?

### Page 44

How does the man in the hat figure out what room he is supposed to stay in?

### Page 47

Why does the man's family appear in the suitcase?

Why does the man hang up the photograph?